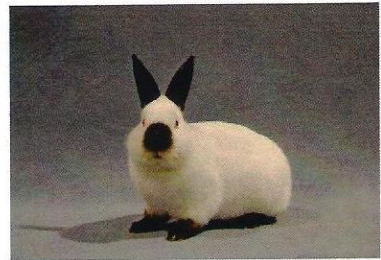
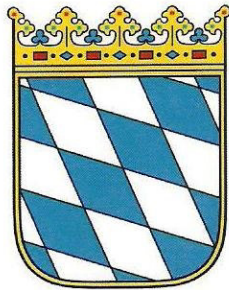


14. Überregionale Clubvergleichsschau

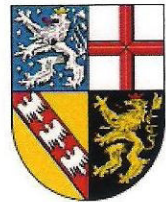
der

*Kalifornier-, Marder-,
Siamesen- und Russenkaninchen*

*angeschlossen die Schau zum 30jährigen Jubiläum
des Ausrichters - Club Bayern -*



*am 04. und 05. Oktober 2014
in der Zuchtanlage in Möhrendorf
Dechsendorfer Straße 1*



Schirmherr: Thomas Fischer

1. Bürgermeister von Möhrendorf

Möhrendorf Kleintierzüchterheim im Oktober 2014

Überregionale Kal-,M-,Si-,R-Clubschau

mittelgroße Rassen

Große Marderkaninchen braun



PR: Krause Roland/Müller Franz/Sondershaus Rainer

Kapp Joachim

Elisenstr. 41, 07950 Triebes, Tel.: 0175 3687982

1	Z2	0.1	T 196	3415	20,0	18,0	14,0	14,5	14,5	9,5	5,0	95,5	sg	
2	Z2	0.1	T 196	3416	20,0	19,0	14,0	14,0	14,5	9,0	5,0	95,5	sg	55,00 €
3	Z2	0.1	T 196	3418	20,0	19,0	14,0	14,0	14,5	9,5	5,0	96,0	sg	
4	Z2	0.1	T 196	3419	20,0	18,5	13,5	14,5	14,5	9,5	5,0	95,5	sg	55,00 €
1														Rassemeister 382,5

Große Marderkaninchen blau

Kapp Joachim

Elisenstr. 41, 07950 Triebes, Tel.: 0175 3687982

5	Z3	0.1	T 196	5434	20,0	19,0	14,0	14,5	14,5	9,5	5,0	96,5	hv	
6	Z3	0.1	T 196	3421	20,0	19,0	14,0	13,5	14,0	9,5	5,0	95,0	sg	55,00 €
7	Z3	0.1	T 196	3412	20,0	18,0	14,5	14,0	14,5	9,5	5,0	95,5	sg	
8	Z3	1.0	T 196	3417	0,0	0,0	0,0	0,0	0,0	0,0	0,0		fehlt	
2														

Kalifornier schwarz-weiß



Weil Regina

Backhausweg 2, 35444 Biebental, Tel.: 06409-2405

9	Z1	1.0	H 484	4313	20,0	19,0	13,0	14,0	14,0	9,5	5,0	94,5	sg	
10	Z1	1.0	H 484	3417	20,0	19,0	14,0	15,0	14,5	9,0	5,0	96,5	hv	
11	Z1	1.0	H 484	3418	20,0	18,5	14,0	14,0	14,0	9,0	5,0	94,5	sg	
12	Z1	0.1	H 484	3424	20,0	19,0	14,0	14,0	13,5	8,5	5,0	94,0	sg	
3														379,5 SoE-8
13	Z3	1.0	H 484	4317	20,0	19,0	14,0	14,0	13,5	9,0	5,0	94,5	sg	
14	Z3	0.1	H 484	6333	20,0	18,5	14,0	14,5	14,5	9,5	5,0	96,0	sg	55,00 €
15	Z3	0.1	H 484	242	20,0	18,5	13,5	14,0	14,5	9,5	5,0	95,0	sg	
16	Z3	0.1	H 484	3423	20,0	19,0	14,0	14,0	13,0	8,5	5,0	93,5	g	55,00 €
4														379,0 SoE-11

Drommershausen Rainer

Bachstr. 43, 35584 Wetzlar-Naunheim, Tel.: 0171 9566665

17	Z2	1.0	H 149	1417	20,0	19,0	14,0	14,5	13,5	8,5	5,0	94,5	sg	
18	Z2	1.0	H 149	1418	20,0	19,0	14,0	14,5	14,5	9,0	5,0	96,0	sg	
19	Z2	1.0	H 149	2432	20,0	18,5	14,0	14,0	14,0	9,0	5,0	94,5	sg	66,00 €
20	Z2	1.0	H 149	2434	20,0	18,5	14,0	14,0	13,5	8,5	5,0	93,5	g	66,00 €
5														378,5

Meyer Dieter

Gralsteder Weg 2, 26316 Varel, Tel.: 0175 24265481

21	Z2	1.0	I 202	3431	20,0	19,0	14,0	14,5	14,0	9,5	5,0	96,0	sg	55,00 €
22	Z2	1.0	I 202	3432	20,0	18,5	14,0	14,0	14,0	8,5	5,0	94,0	sg	55,00 €
23	Z2	0.1	I 202	4437	20,0	18,5	14,0	14,5	14,0	9,0	5,0	95,0	sg	55,00 €
24	Z2	0.1	I 202	4436	20,0	19,0	14,0	14,0	14,5	9,5	5,0	96,0	sg	55,00 €
6														381,0 SoE-10

Kat.-Nr.: Z-Gr: Geschl.: TÄto: 1. 2. 3. 4. 5. 6. 7. Pkt. Preis Vkpr.:

PR: Krause Roland/Müller Franz/Sondershaus Rainer

ZGM - Dragomir

Schultenhahn 16, 59823 Arnsberg, Tel.: 02931-13612

25	Z2	1.0	W 332	1410	20,0	18,5	13,5	14,5	14,5	9,5	5,0	95,5	sg
26	Z2	0.1	W 332	1412	20,0	18,0	14,0	14,5	14,5	9,5	5,0	95,5	sg
27	Z2	1.0	W 332	2417	20,0	18,5	14,0	13,5	14,0	9,0	5,0	94,0	sg
28	Z2	0.1	W 332	2420	20,0	19,0	14,0	14,5	14,5	9,5	5,0	96,5	hv Sieger

7

Rassemeister **381,5**

Meyer Dieter

Gralsteder Weg 2, 26316 Varel, Tel.: 0175 24265481

29	Z3	1.0	I 202	3430	20,0	18,5	13,5	14,5	14,0	9,0	5,0	94,5	sg	55,00 €
30	Z3	1.0	I 202	149	20,0	19,0	14,0	14,5	14,5	8,5	5,0	95,5	sg	55,00 €
31	Z3	0.1	I 202	2428	20,0	18,0	13,0	14,0	14,0	9,0	5,0	93,0	g	55,00 €
32	Z3	0.1	I 202	3415	20,0	17,0	13,5	14,0	14,5	9,0	5,0	93,0	g	55,00 €

8

376,0

Jaworek Jan

Uferstr. 5, 91275 Auerbach, Tel.: 09643-3007280

33	Z3	0.1	B 853	147	20,0	19,0	13,5	14,5	14,0	9,5	5,0	95,5	sg
34	Z3	1.0	B 853	1411	20,0	19,0	13,5	15,0	13,5	8,5	5,0	94,5	sg
35	Z3	0.1	B 853	1412	20,0	17,0	13,0	13,5	14,0	9,0	5,0	91,5	b
36	Z3	0.1	B 853	1413	20,0	18,5	14,0	14,0	14,0	9,5	5,0	95,0	sg

9

376,5

Drommershausen Rainer

Bachstr. 43, 35584 Wetzlar-Naunheim, Tel.: 0171 9566665

37	Z2	1.0	H 149	1417	20,0	19,0	14,0	14,0	14,0	0,0	0,0	n. B.	66,00 €
38	Z2	0.1	H 149	1420	20,0	18,5	14,0	14,0	14,0	9,0	5,0	94,5	sg
39	Z2	1.0	H 149	2440	20,0	19,0	14,0	13,5	14,5	8,5	5,0	94,5	sg
40	Z2	1.0	H 149	2442	20,0	19,0	14,0	14,0	14,5	9,5	5,0	96,0	sg

10

Jaworek Jan

Uferstr. 5, 91275 Auerbach, Tel.: 09643-3007280

41	Z3	1.0	B 853	149	20,0	18,5	13,0	14,5	14,0	8,5	5,0	93,5	g
42	Z3	1.0	B 853	1415	20,0	19,0	14,0	14,0	14,5	9,0	5,0	95,5	sg
43	Z3	1.0	B 853	1410	20,0	19,0	13,0	15,0	13,5	8,5	5,0	94,0	sg
44	Z3	0.1	B 853	1416	20,0	19,0	14,0	13,5	14,0	9,0	5,0	94,5	sg

11

377,5

ZGM - Dragomir

Schultenhahn 16, 59823 Arnsberg, Tel.: 02931-13612

45	E	1.0	W 332	2425	20,0	18,5	13,5	14,0	14,0	9,5	5,0	94,5	sg
----	---	-----	-------	------	------	------	------	------	------	-----	-----	------	----

kleine Rassen

Marderkaninchen braun



Meyer Dieter

Gralsteder Weg 2, 26316 Varel, Tel.: 0175 24265481

46	Z1	0.1	T 196	4320	20,0	18,0	14,0	13,5	14,0	9,5	5,0	94,0	sg
47	Z1	1.0	I 202	441	20,0	19,5	14,0	13,5	15,0	10,0	5,0	97,0	v
48	Z1	1.0	I 202	442	20,0	19,0	14,0	14,0	14,0	9,5	5,0	95,5	sg
49	Z1	0.1	I 202	445	20,0	19,0	14,0	0,0	0,0	0,0	0,0	n. B.	

12

Krone Waldemar

Up de Loog 4, 21255 Dohren, Tel.: 0170 2262699

50	Z3	1.0	F 65	341	20,0	18,5	14,0	14,0	15,0	9,5	5,0	96,0	sg	44,00 €
51	Z3	1.0	F 65	3412	20,0	19,0	14,0	14,5	14,5	9,5	5,0	96,5	hv	44,00 €
52	Z3	0.1	F 65	343	20,0	19,0	14,0	14,0	14,5	9,5	5,0	96,0	sg	44,00 €
53	Z3	0.1	F 65	344	20,0	18,0	14,0	14,0	14,5	9,5	5,0	95,0	sg	44,00 €

13

383,5 SoE-3

Ruf Mathias

Stöcklesgasse 11, 77656 Offenburg-Zunsweier, Tel.: 0781-9671863

54	Z3	1.0	C 624	243	20,0	19,0	14,0	14,0	14,0	9,5	5,0	95,5	sg
55	Z3	0.1	C 624	244	20,0	19,0	14,0	14,0	14,5	9,5	5,0	96,0	sg
56	Z3	0.1	C 624	246	20,0	18,5	14,0	14,0	13,5	0,0	0,0	n. B.	
57	Z3	0.1	C 624	4420	20,0	18,5	14,0	13,5	14,0	9,5	5,0	94,5	sg

14

Kat.-Nr.:	Z-Gr:	Geschl.:	Täto:	1.	2.	3.	4.	5.	6.	7.	Pkt.	Preis	Vkpr.:
-----------	-------	----------	-------	----	----	----	----	----	----	----	------	-------	--------

PR: Krause Roland/Müller Franz/Sondershaus Rainer

Knorr Gerhard

Alte Schulstraße 9a, 76848 Wilgartswiesen, Tel.: 06392-2825

58	Z2	1.0	P 3	346	20,0	19,0	14,0	14,5	14,5	9,5	5,0	96,5	hv	
59	Z2	1.0	P 3	347	20,0	18,5	14,0	14,0	14,0	9,0	5,0	94,5	sg	
60	Z2	0.1	P 3	3410	20,0	19,0	14,0	14,5	14,5	9,0	5,0	96,0	sg	
61	Z2	0.1	P 3	3411	20,0	18,5	14,0	14,0	14,5	9,5	5,0	95,5	sg	44,00 €
15												382,5	SoE-9	

Durnik Willi

Erlangerstr. 32, 91096 Möhrendorf, Tel.: 0151-27160147

62	Z2	1.0	B 456	244	20,0	19,0	14,0	14,0	14,5	7,0	5,0	93,5	g	
63	Z2	1.0	B 456	242	20,0	19,5	13,5	14,5	14,5	9,5	5,0	96,5	hv	
64	Z2	1.0	B 456	345	20,0	19,0	14,5	14,0	14,0	9,5	5,0	96,0	sg	
65	Z2	1.0	B 456	346	20,0	18,5	14,0	14,0	14,5	9,0	5,0	95,0	sg	
16												381,0	SoE-10	

Kreutzer Hans-Joachim

Hauptstraße 23, 66649 Oberthal, Tel.: 0152 09861827

66	Z2	1.0	SR 141	4426	20,0	19,5	13,5	14,5	14,5	9,5	5,0	96,5	hv	27,50 €
67	Z2	1.0	SR 141	4427	20,0	19,5	14,0	14,5	15,0	9,5	5,0	97,5	v Sieger	27,50 €
68	Z2	1.0	SR 141	4439	20,0	18,5	14,0	14,0	14,5	9,0	5,0	95,0	sg	27,50 €
69	Z2	0.1	SR 141	4443	20,0	18,5	13,5	13,5	14,0	9,0	5,0	93,5	g	27,50 €
17												382,5	SoE-6	

Krone Waldemar

Up de Loog 4, 21255 Dohren, Tel.: 0170 2262699

70	Z2	1.0	F 65	5422	20,0	18,0	13,5	14,0	14,0	9,0	5,0	93,5	g	44,00 €
71	Z2	1.0	F 65	5420	20,0	18,5	13,0	14,5	14,5	8,5	5,0	94,0	sg	44,00 €
72	Z2	1.0	F 65	5421	20,0	18,5	14,0	14,0	14,5	9,0	5,0	95,0	sg	44,00 €
73	Z2	0.1	F 65	5423	20,0	18,5	13,5	14,0	14,0	9,0	5,0	94,0	sg	44,00 €
18												376,5		

Falkner Alfons

Hundsdorf 32, 94136 Thyrnau, Tel.: 08501-792

74	Z2	1.0	B 681	4410	20,0	19,0	14,0	14,5	14,5	9,0	5,0	96,0	sg	33,00 €
75	Z2	0.1	B 681	4411	20,0	19,0	14,5	14,5	14,5	9,5	5,0	97,0	v Sieger	
76	Z2	1.0	B 681	444	20,0	19,0	14,0	14,5	15,0	9,5	5,0	97,0	v	
77	Z2	1.0	B 681	445	20,0	18,5	13,5	14,0	14,5	9,0	5,0	94,5	sg	
19												384,5	VCE	

Knorr Gerhard

Alte Schulstraße 9a, 76848 Wilgartswiesen, Tel.: 06392-2825

78	Z2	1.0	P 3	431	20,0	18,5	14,5	14,5	14,5	9,5	5,0	96,5	hv	
79	Z2	1.0	P 3	343	20,0	18,0	13,5	14,0	14,5	9,5	5,0	94,5	sg	
80	Z2	0.1	P 3	344	20,0	18,0	13,5	14,0	14,0	9,0	5,0	93,5	g	
81	Z2	0.1	P 3	345	20,0	18,5	13,5	14,5	14,5	9,0	5,0	95,0	sg	
20												379,5	SoE-11	

Durnik Willi

Erlangerstr. 32, 91096 Möhrendorf, Tel.: 0151-27160147

82	Z3	1.0	B 456	349	20,0	18,5	14,0	14,0	14,0	9,0	5,0	94,5	sg	
83	Z3	1.0	B 456	3410	20,0	17,5	13,5	14,0	14,0	8,5	5,0	92,5	g	
84	Z3	0.1	B 456	347	20,0	18,0	14,0	14,5	14,5	9,0	5,0	95,0	sg	
85	Z3	0.1	B 456	3411	20,0	18,5	14,0	14,0	14,0	9,0	5,0	94,5	sg	
21												376,5		

Drewes Birgit

Lenninghauserweg 1, 58640 Iserlohn, Tel.: 02378-8659946

86	Z2	0.1	W 390	245	19,0	18,0	13,5	14,0	14,0	8,5	5,0	92,0	g	
87	Z2	0.1	W 390	246	20,0	18,0	13,5	14,0	14,5	9,0	5,0	94,0	sg	
88	Z2	0.1	W 390	2415	20,0	19,0	14,0	13,5	14,5	9,0	5,0	95,0	sg	
89	Z2	0.1	W 390	2418	20,0	18,5	14,0	14,0	14,0	9,0	5,0	94,5	sg	
22												375,5		

Kapp Joachim

Elisenstr. 41, 07950 Triebes, Tel.: 0175 3687982

90	Z2	1.0	T 196	3426	20,0	18,5	14,0	14,5	14,0	10,0	5,0	96,0	sg	
91	Z2	1.0	T 196	3427	20,0	18,5	14,0	14,0	14,5	10,0	5,0	96,0	sg	
92	Z2	1.0	T 196	3424	20,0	19,0	14,0	14,5	15,0	9,5	5,0	97,0	v	
93	Z2	1.0	T 196	3425	20,0	18,5	14,5	14,5	14,5	9,5	5,0	96,5	hv	
23												385,5	Rassemeister	

Kat.-Nr.:	Z-Gr:	Geschl.:	Täto:	1.	2.	3.	4.	5.	6.	7.	Pkt.	Preis	Vkpr.:
-----------	-------	----------	-------	----	----	----	----	----	----	----	------	-------	--------

PR: Krause Roland/Müller Franz/Sondershaus Rainer

Seidewitz Thomas

Nordstraße 2a, 06774 Muldestausee OT Pouch, Tel.: 0170 1089269

94	Z3	1.0	G 407	3428	20,0	19,0	14,5	14,0	14,0	9,5	5,0	96,0	sg	44,00 €
95	Z3	1.0	G 407	3422	20,0	18,5	14,0	14,5	15,0	9,5	5,0	96,5	hv	49,50 €
96	Z3	0.1	G 407	3430	20,0	18,5	13,5	14,0	14,0	9,0	5,0	94,0	sg	49,50 €
97	Z3	0.1	G 407	3433	20,0	19,0	14,0	14,0	14,5	9,0	5,0	95,5	sg	49,50 €
												382,0	SoE-9	

Leupold Christian

Marieneyer Str. 4, 08261 Schöneck - OTSchildbach, Tel.: 037464-83074

98	Z3	1.0	S 479	349	20,0	18,5	13,5	14,5	14,5	9,0	5,0	95,0	sg	
99	Z3	0.1	S 479	4439	20,0	18,5	14,0	14,0	14,0	9,5	5,0	95,0	sg	
100	Z3	1.0	S 479	3413	20,0	19,0	13,5	14,5	14,5	9,5	5,0	96,0	sg	
101	Z3	0.1	S 479	3415	20,0	18,5	14,0	14,0	14,0	9,0	5,0	94,5	sg	
												380,5	SoE-10	
102	Z3	1.0	S 479	3417	20,0	19,0	14,0	14,5	14,5	9,5	5,0	96,5	hv	
103	Z3	0.1	S 479	3419	0,0	0,0	0,0	0,0	0,0	0,0	0,0	n. B.		
104	Z3	0.1	S 479	3416	20,0	18,5	14,0	14,5	15,0	9,0	5,0	96,0	sg	
105	Z3	0.1	S 479	4431	20,0	19,0	13,5	14,5	14,5	9,5	5,0	96,0	sg	

Kreutzer Hans-Joachim

Hauptstraße 23, 66649 Oberthal, Tel.: 0152 09861827

106	Z3	1.0	SR 141	2410	20,0	18,0	14,0	14,0	14,0	9,5	5,0	94,5	sg	27,50 €
107	Z3	0.1	SR 141	2412	20,0	18,0	14,0	14,0	14,0	9,5	5,0	94,5	sg	27,50 €
108	Z3	1.0	SR 141	2418	20,0	19,0	14,0	14,0	14,5	9,5	5,0	96,0	sg	27,50 €
109	Z3	1.0	SR 141	2421	20,0	19,0	14,5	14,5	14,5	9,5	5,0	97,0	v	27,50 €
												382,0	SoE-9	

Marderkaninchen blau

Dutschmann Gerhard

Zum Felsenkeller 39, 90411 Nürnberg

110	Z2	1.0	B 407	448	20,0	18,5	14,0	14,5	14,5	9,5	5,0	96,0	sg	
111	Z2	1.0	B 407	449	20,0	18,5	14,0	14,5	14,5	9,5	5,0	96,0	sg	
112	Z2	0.1	B 407	4411	20,0	18,5	14,5	14,0	14,5	9,5	5,0	96,0	sg	
113	Z2	0.1	B 407	4412	20,0	18,5	14,0	14,0	14,0	9,0	5,0	94,5	sg	
												382,5	SoE-7	

Hofmann Andreas

Ernst Thälmann Str.32, 98724 Neuhaus a/Rwg, Tel.: 0170 1607170

114	Z3	1.0	T 628	3418	20,0	19,0	14,0	14,5	14,5	10,0	5,0	97,0	v	
115	Z3	0.1	T 628	2411	20,0	18,0	14,0	14,0	14,0	9,5	5,0	94,5	sg	
116	Z3	1.0	T 628	4426	20,0	19,0	14,0	14,5	14,0	9,5	5,0	96,0	sg	
117	Z3	0.1	T 628	245	20,0	18,5	14,0	14,0	14,5	9,5	5,0	95,5	sg	
												383,0	SoE-4	

Axmann Jeanette

Burgstall 4, 91257 Pegnitz, Tel.: 09241-4890673

118	Z2	1.0	B 851	141	20,0	18,5	13,5	14,0	14,5	9,5	5,0	95,0	sg	
119	Z2	0.1	B 851	142	20,0	18,5	14,0	14,5	14,0	9,5	5,0	95,5	sg	
120	Z2	0.1	B 851	143	20,0	19,0	13,5	14,0	14,0	10,0	5,0	95,5	sg	
121	Z2	0.1	B 851	144	20,0	18,5	14,0	14,0	14,0	9,5	5,0	95,0	sg	
												381,0	SoE-10	

Seuthe Martin

Ratscheller Weg 39a, 58840 Plettenberg, Tel.: 02391-970369

122	Z2	1.0	W 527	3413	20,0	18,5	14,0	14,5	14,5	9,5	5,0	96,0	sg	
123	Z2	0.1	W 527	3415	20,0	18,5	14,5	13,5	14,0	9,5	5,0	95,0	sg	
124	Z2	1.0	W 527	348	20,0	19,0	14,0	14,0	14,5	9,5	5,0	96,0	sg	
125	Z2	0.1	W 527	3410	20,0	18,5	14,0	14,5	15,0	9,5	5,0	96,5	hv	
												383,5	SoE-2	

Hofmann Andreas

Ernst Thälmann Str.32, 98724 Neuhaus a/Rwg, Tel.: 0170 1607170

126	Z2	1.0	T 628	3421	20,0	19,0	14,0	14,5	14,5	9,5	5,0	96,5	hv	
127	Z2	1.0	T 628	3422	20,0	19,0	14,0	14,5	14,5	9,5	5,0	96,5	hv	
128	Z2	1.0	T 628	3412	20,0	18,5	14,0	14,5	14,5	9,5	5,0	96,0	sg	
129	Z2	0.1	T 628	3416	20,0	19,0	14,5	14,5	14,0	9,5	5,0	96,5	hv	
												Rassemeister 385,5		

Kat.-Nr.: Z-Gr: Geschl.: TÄto: 1. 2. 3. 4. 5. 6. 7. Pkt. Preis Vkpr.:

PR: Krause Roland/Müller Franz/Sondershaus Rainer

Schmitt Heinrich

Burgstall 4, 91257 Pegnitz, Tel.: 09241-5696

130	Z2	1.0	B 851	245	20,0	19,0	14,0	14,5	14,5	9,5	5,0	96,5	hv
131	Z2	1.0	B 851	247	20,0	18,5	14,0	14,5	14,5	9,5	5,0	96,0	sg
132	Z2	1.0	B 851	3413	20,0	19,0	14,0	14,5	14,5	9,5	5,0	96,5	hv
133	Z2	0.1	B 851	3414	20,0	19,0	14,0	14,0	14,5	9,5	5,0	96,0	sg
33												385,0	LVE

Wensorra Hans-Joachim

Josph-Haydn-Str. 14, 98529 Suhl, Tel.: 0170 6211430

134	Z3	0.1	T 315	5429	20,0	18,5	14,0	14,5	14,5	10,0	5,0	96,5	hv
135	Z3	0.1	T 315	349	20,0	18,5	14,0	14,5	14,5	9,5	5,0	96,0	sg
136	Z3	1.0	T 315	3414	20,0	18,0	13,5	14,0	14,5	10,0	5,0	95,0	sg
137	Z3	0.1	T 315	5432	20,0	19,0	14,0	14,5	14,5	9,5	5,0	96,5	hv
34												384,0	SoE-1

Knorr Gerhard

Alte Schulstraße 9a, 76848 Wilgartswiesen, Tel.: 06392-2825

138	Z2	1.0	P 3	341	20,0	18,0	14,0	14,5	14,5	9,5	5,0	95,5	sg
139	Z2	1.0	P 3	342	20,0	19,0	14,0	14,5	14,5	9,5	5,0	96,5	hv
140	Z2	0.1	P 3	343	20,0	18,5	14,0	14,5	14,0	9,5	5,0	95,5	sg
141	Z2	0.1	P 3	344	20,0	18,0	14,0	14,5	14,5	9,5	5,0	95,5	sg
35												383,0	SoE-5
142	Z3	1.0	P 3	3410	20,0	19,5	14,0	14,5	14,5	9,5	5,0	97,0	v Sieger
143	Z3	1.0	P 3	4415	20,0	18,0	14,0	14,5	14,5	9,5	5,0	95,5	sg
144	Z3	1.0	P 3	5419	20,0	19,0	14,0	14,5	14,5	9,5	5,0	96,5	hv
145	Z3	0.1	P 3	3411	20,0	19,0	14,0	14,5	14,5	9,5	5,0	96,5	hv
36												385,5	LVE

Herold Martin

Ratstraße 7, 74229 Oedheim, Tel.: 0160-6263504

146	Z3	1.0	Z 122	3411	20,0	19,0	14,0	14,5	15,0	9,0	5,0	96,5	hv
147	Z3	1.0	Z 122	344	20,0	19,0	14,0	14,5	14,5	10,0	5,0	97,0	v 44,00 €
148	Z3	1.0	Z 122	3424	20,0	18,5	14,0	15,0	14,5	9,5	5,0	96,5	hv 44,00 €
149	Z3	0.1	Z 122	4438	20,0	18,0	14,0	14,5	14,5	9,5	5,0	95,5	sg
37												385,5	LVE

Knorr Gerhard

Alte Schulstraße 9a, 76848 Wilgartswiesen, Tel.: 06392-2825

150	Z3	1.0	P 3	347	20,0	18,5	13,5	14,5	14,5	9,5	5,0	95,5	sg
151	Z3	1.0	P 3	348	20,0	19,0	13,5	14,5	15,0	9,5	5,0	96,5	hv
152	Z3	0.1	P 3	345	20,0	18,5	14,0	14,5	15,0	9,5	5,0	96,5	hv
153	Z3	0.1	P 3	5416	20,0	18,0	13,5	14,5	14,5	10,0	5,0	95,5	sg
38												384,0	SoE-1

Schrader Claus

Bredelemer Weg 1, 38704 Ostharingen, Tel.: 05346-947264

154	Z3	1.0	F 65	241	20,0	18,5	14,0	14,5	14,5	9,0	5,0	95,5	sg
155	Z3	0.1	F 65	243	20,0	18,0	14,0	14,5	14,0	9,0	5,0	94,5	sg
156	Z3	1.0	F 65	246	20,0	19,0	14,0	14,5	14,5	9,5	5,0	96,5	hv
157	Z3	1.0	F 65	4429	20,0	17,5	14,0	14,5	14,5	9,5	5,0	95,0	sg
39												381,5	SoE-10

Siamesen gelb



Richter Gisela

Industriestr. 10, 75181 Pforzheim - Huchenfeld, Tel.: 07231-70843

158	Z3	0.1	C 86	344	20,0	19,0	14,0	13,0	13,0	10,0	5,0	94,0	sg
159	Z3	0.1	C 86	346	20,0	18,0	14,0	14,0	14,0	9,5	5,0	94,5	sg
160	Z3	0.1	C 86	345	20,0	19,0	14,0	14,0	14,5	9,5	5,0	96,0	sg
161	Z3	1.0	C 86	5425	20,0	18,5	14,0	14,5	13,5	10,0	5,0	95,5	sg
40												380,0	Rassemeister

Wohlgemut Uwe

Rudolf Breitscheidt Str. 33, 28779 Bremen, Tel.: 0421-6028970

162	Z3	1.0	HB 17	4413	20,0	19,0	14,0	0,0	0,0	0,0	0,0	n. B.	
163	Z3	0.1	HB 17	4414	20,0	18,5	13,5	14,5	14,5	9,5	5,0	95,5	sg
164	Z3	0.1	HB 17	4416	20,0	18,5	14,0	14,0	14,0	10,0	5,0	95,5	sg
165	Z3	0.1	HB 17	3410	20,0	0,0	0,0	0,0	0,0	0,0	0,0	n. B.	
41													

Kat.-Nr.: Z-Gr: Geschl.: TÄto: 1. 2. 3. 4. 5. 6. 7. Pkt. Preis Vkpr.:

PR: Krause Roland/Müller Franz/Sondershaus Rainer

Glaser Anneliese Ratstraße 7, 74229 Oedheim, Tel.: 07136-2708154

166 E 0.1 Z 122 142 0,0 0,0 0,0 0,0 0,0 0,0 0,0 leer

Siamesen blau

Kapp Joachim

Elisenstr. 41, 07950 Triebes, Tel.: 0175 3687982

167 Z2 0.1 T 196 343 20,0 18,0 14,0 14,5 14,5 10,0 5,0 96,0 sg
 168 Z2 1.0 T 196 341 20,0 18,5 14,0 14,5 14,5 9,5 5,0 96,0 sg
 169 Z2 0.1 T 196 346 20,0 18,5 14,0 14,0 14,5 9,5 5,0 95,5 sg
 170 Z2 0.1 T 196 345 20,0 18,5 14,0 14,5 14,5 10,0 5,0 96,5 hv
 42 Rassemeister **384,0**

Knorr Gerhard

Alte Schulstraße 9a, 76848 Wilgartswiesen, Tel.: 06392-2825

171 Z3 1.0 P 3 5412 20,0 18,0 14,0 14,5 14,5 9,5 5,0 95,5 sg
 172 Z3 1.0 P 3 345 20,0 18,5 14,0 14,5 15,0 9,5 5,0 96,5 hv
 173 Z3 1.0 P 3 349 20,0 19,0 14,5 14,5 14,0 10,0 5,0 97,0 v
 174 Z3 0.1 P 3 346 20,0 18,0 14,0 14,0 14,5 9,5 5,0 95,0 sg
 43 **384,0** SoE-1

Bach Dieter

Industriestr. 10, 75181 Pforzheim - Huchenfeld, Tel.: 07231-70843

175 Z3 0.1 C 40 542 0,0 0,0 0,0 0,0 0,0 0,0 0,0 o. B.
 176 Z3 0.1 C 40 444 20,0 19,0 14,0 14,5 14,0 10,0 5,0 96,5 hv
 177 Z3 0.1 C 40 443 20,0 19,0 14,0 14,5 14,0 9,5 5,0 96,0 sg
 178 Z3 1.0 C 40 441 20,0 18,5 14,0 14,5 13,5 9,5 5,0 95,0 sg
 44

Russen schwarz-weiß



PR: Gambel Karl/Mösch Thomas/Winter Erwin

Schiffel Martin

Siegenerstr. 22, 35630 Ehringshausen, Tel.: 06449-1302

179 Z2 0.1 H 149 146 20,0 18,5 14,0 14,0 14,0 9,5 5,0 95,0 sg
 180 Z2 1.0 H 149 247 20,0 18,5 14,0 14,0 14,0 8,0 5,0 93,5 g
 181 Z2 1.0 H 149 142 20,0 18,5 13,5 14,5 14,5 8,0 5,0 94,0 sg
 182 Z2 0.1 H 149 249 20,0 18,5 14,0 0,0 0,0 0,0 0,0 n. B.
 45

Zink Valeri

Einhauser Weg 4, 49757 Werlte, Tel.: 05951-5780

183 Z2 1.0 I 202 143 20,0 19,0 14,0 14,0 14,0 9,0 5,0 95,0 sg 38,50 €
 184 Z2 1.0 I 202 144 20,0 19,0 14,0 14,5 14,0 9,0 5,0 95,5 sg 38,50 €
 185 Z2 1.0 I 202 2416 20,0 18,5 14,0 14,5 14,0 9,5 5,0 95,5 sg 38,50 €
 186 Z2 0.1 I 202 2417 20,0 18,5 14,5 14,5 14,0 9,0 5,0 95,5 sg 38,50 €
 46 **381,5** SoE-4

Hoffman Reiner

An der Kirche 20 OT Gerlebogk, 06420 Könnern, Tel.: 034691-22576

187 Z2 0.1 G 367 3410 20,0 18,5 14,0 14,5 14,5 9,5 5,0 96,0 sg
 188 Z2 0.1 G 367 3411 20,0 18,5 14,0 14,0 14,5 9,0 5,0 95,0 sg
 189 Z2 1.0 G 367 142 20,0 19,0 14,0 14,0 14,5 9,5 5,0 96,0 sg
 190 Z2 0.1 G 367 143 20,0 18,5 13,5 14,0 14,5 8,5 5,0 94,0 sg
 47 **381,0** SoE-9

Dillenberger Gerhard

Kirchstrasse 6, 65597 Hünfelden-Mensfelden, Tel.: 06431-2120559

191 Z2 1.0 H 46 3412 20,0 19,0 14,0 14,0 14,5 9,5 5,0 96,0 sg
 192 Z2 1.0 H 46 3414 20,0 18,5 14,0 14,5 14,5 9,0 5,0 95,5 sg
 193 Z2 0.1 H 46 3415 20,0 18,5 13,5 14,5 14,0 8,5 5,0 94,0 sg
 194 Z2 0.1 H 46 3416 20,0 19,0 14,0 14,0 14,0 10,0 5,0 96,0 sg
 48 **381,5** SoE-5

Kat.-Nr.:	Z-Gr:	Geschl.:	Täto:	1.	2.	3.	4.	5.	6.	7.	Pkt.	Preis	Vkpr.:
-----------	-------	----------	-------	----	----	----	----	----	----	----	------	-------	--------

PR: Gambel Karl/Mösch Thomas/Winter Erwin

Werner Maik

Alte Arstädter Straße 18, 99326 Ilmtal/ OT Dienstedt, Tel.: 0152-06008040

195	Z2	1.0	T 32	2439	20,0	18,5	14,0	14,0	14,5	9,0	5,0	95,0	sg	27,50 €
196	Z2	1.0	T 32	2440	20,0	18,0	13,5	14,0	14,5	9,0	5,0	94,0	sg	27,50 €
197	Z2	1.0	T 32	4472	20,0	18,5	13,5	14,5	14,0	9,5	5,0	95,0	sg	22,00 €
198	Z2	0.1	T 32	3451	20,0	18,0	14,5	14,5	14,5	9,5	5,0	96,0	sg	44,00 €
49												380,0		

Fehringer Karlheinz

Allendorfer Grund 2, 35260 Stadallendorf, Tel.: 06428-5713

199	Z2	1.0	K 1	2413	20,0	19,0	14,0	14,5	14,5	8,5	5,0	95,5	sg	33,00 €
200	Z2	1.0	K 1	2414	20,0	19,0	14,0	14,5	14,0	9,5	5,0	96,0	sg	33,00 €
201	Z2	0.1	K 1	2415	20,0	18,5	14,0	14,5	14,5	9,5	5,0	96,0	sg	
202	Z2	0.1	K 1	2417	20,0	18,0	13,5	14,5	14,5	9,0	5,0	94,5	sg	
50												382,0	SoE-2	

Sandmann Ingrid

Sudetenstraße 9, 96253 Untersiemau, Tel.: 09565/6775

203	Z1	1.0	B 902	441	20,0	18,5	14,0	14,5	14,0	9,5	5,0	95,5	sg	
204	Z1	1.0	B 902	333	20,0	19,0	14,0	14,0	14,5	9,5	5,0	96,0	sg	
205	Z1	0.1	B 902	446	20,0	18,5	13,5	14,0	14,5	9,0	5,0	94,5	sg	
206	Z1	0.1	B 902	447	20,0	18,5	14,0	14,5	14,0	9,0	5,0	95,0	sg	
51												381,0	SoE-9	

Tepel Wilfried

Heimberg 9, 34519 Diemelsee-Adorf, Tel.: 05633-5297

207	Z1	1.0	K 71	131	20,0	18,5	13,0	14,5	14,5	9,5	5,0	95,0	sg	
208	Z1	1.0	K 71	149	20,0	18,5	14,0	14,5	14,5	9,5	5,0	96,0	sg	
209	Z1	1.0	K 71	1410	20,0	18,5	14,0	14,5	14,5	9,5	5,0	96,0	sg	
210	Z1	0.1	K 71	1411	20,0	18,5	14,5	14,0	15,0	9,0	5,0	96,0	sg	
52												383,0	VCE	

Gantner Harald

Siedlerstr. 15, 87544 Blaichach, Tel.: 08321-82480

211	Z3	1.0	B 277	341	20,0	19,0	14,0	15,0	14,5	9,5	5,0	97,0	v	
212	Z3	0.1	B 277	344	20,0	18,5	14,0	14,5	14,0	9,5	5,0	95,5	sg	
213	Z3	1.0	B 277	445	20,0	18,0	14,5	14,5	14,5	9,5	5,0	96,0	sg	
214	Z3	1.0	B 277	446	20,0	18,5	14,0	14,0	14,5	9,5	5,0	95,5	sg	
53												384,0	LVE	

Zeuner Jürgen

Jenaer Str. 28, 07589 Münchenbernsdorf, Tel.: 036604

215	Z3	1.0	T 128	148	20,0	18,5	13,5	14,5	14,5	9,5	5,0	95,5	sg	
216	Z3	1.0	T 128	149	0,0	0,0	0,0	0,0	0,0	0,0	0,0	n. B.		
217	Z3	0.1	T 128	412	20,0	17,5	13,5	14,5	14,5	9,5	5,0	94,5	sg	
218	Z3	0.1	T 128	1413	20,0	18,5	13,5	14,5	14,0	9,5	5,0	95,0	sg	
54														

Atzert Paul

Johannes Str. 2, 36119 Neuhoof-Rommerz, Tel.: 06655-4677

219	Z3	1.0	K 26	241	20,0	19,0	14,5	14,5	14,5	9,5	5,0	97,0	v	Sieger
220	Z3	0.1	K 26	2415	20,0	19,0	14,5	14,0	14,5	9,5	5,0	96,5	hv	
221	Z3	0.1	K 26	245	20,0	19,0	14,0	14,5	14,5	9,5	5,0	96,5	hv	
222	Z3	1.0	K 26	243	20,0	19,0	14,5	14,0	15,0	9,0	5,0	96,5	hv	39,60 €
55			Beste Zgr.									386,5	Rassemeister	beste ZG

Schulze Wilfried

Gubener Vorstadt 23c, 03185 Peitz, Tel.: 035601-30000

223	Z2	1.0	D 184	241	20,0	18,5	14,0	14,0	14,5	9,5	5,0	95,5	sg	
224	Z2	0.1	D 184	244	20,0	18,5	14,0	14,5	14,0	9,5	5,0	95,5	sg	
225	Z2	1.0	D 184	4418	20,0	18,0	14,0	14,5	14,5	9,5	5,0	95,5	sg	
226	Z2	1.0	D 184	4417	20,0	18,5	14,0	14,5	14,5	9,5	5,0	96,0	sg	
56												382,5	SoE-1	

Werner Maik

Alte Arstädter Straße 18, 99326 Ilmtal/ OT Dienstedt, Tel.: 0152-06008040

227	Z3	1.0	T 32	1426	20,0	18,0	14,0	14,0	14,5	9,5	5,0	95,0	sg	
228	Z3	1.0	T 32	3449	20,0	18,5	13,5	14,5	14,5	9,0	5,0	95,0	sg	
229	Z3	0.1	T 32	3460	20,0	19,0	14,0	14,0	14,5	9,5	5,0	96,0	sg	
230	Z3	0.1	T 32	3461	20,0	18,0	13,5	14,5	14,0	9,5	5,0	94,5	sg	
57												380,5	SoE-11	

Kat.-Nr.:	Z-Gr:	Geschl.:	Täto:	1.	2.	3.	4.	5.	6.	7.	Pkt.	Preis	Vkpr.:	
PR: Gambel Karl/Mösch Thomas/Winter Erwin														
Döring Adelbert												Sandgasse 12, 99834 Oberellen, Tel.: 036925-60090		
231	Z2	0.1	T 497	2430	20,0	17,5	14,0	14,5	14,5	9,5	5,0	95,0	sg	27,50 €
232	Z2	0.1	T 497	2431	20,0	19,0	14,0	14,0	14,5	9,0	5,0	95,5	sg	27,50 €
233	Z2	1.0	T 497	2438	20,0	18,5	13,5	14,5	14,0	9,5	5,0	95,0	sg	
234	Z2	1.0	T 497	2439	20,0	18,0	14,0	14,0	14,0	9,0	5,0	94,0	sg	
<i>58</i>												379,5		
Wohlgemut Uwe												Rudolf Breitscheidt Str. 33, 28779 Bremen, Tel.: 0421-6028970		
235	Z2	1.0	HB 17	2422	20,0	18,5	14,0	14,0	14,5	9,5	5,0	95,5	sg	
236	Z2	0.1	HB 17	2426	20,0	19,0	14,0	14,0	14,0	9,0	5,0	95,0	sg	
237	Z2	1.0	HB 17	1413	20,0	18,5	14,0	14,0	14,5	9,0	5,0	95,0	sg	
238	Z2	0.1	HB 17	1415	20,0	19,0	14,5	14,5	14,5	9,5	5,0	97,0	v Sieger	
<i>59</i>												382,5	SoE-1	
Danz Karl-Heinz												Neue Straße 12, 98593 Floh-Seligenthal, Tel.: 03683-608181		
239	Z2	1.0	T 353	3413	20,0	19,0	13,5	13,5	14,0	9,0	5,0	94,0	sg	
240	Z2	1.0	T 353	3414	20,0	18,5	14,5	14,5	14,5	9,0	5,0	96,0	sg	
241	Z2	0.1	T 353	3411	20,0	18,0	13,5	14,0	14,5	9,0	5,0	94,0	sg	
242	Z2	0.1	T 353	3412	20,0	18,5	14,0	14,0	14,5	9,5	5,0	95,5	sg	
<i>60</i>												379,5		
Weigel Gottfried												Richard Denner Str. 15, 07768 Kahla / Thüringen, Tel.: 036424-50703		
243	Z2	1.0	T 93	145	20,0	19,0	14,0	14,5	14,5	8,0	5,0	95,0	sg	
244	Z2	1.0	T 93	146	20,0	19,0	14,0	14,5	14,5	9,5	5,0	96,5	hv	
245	Z2	1.0	T 93	142	20,0	0,0	0,0	0,0	0,0	0,0	0,0	n. B.		
246	Z2	1.0	T 93	143	20,0	0,0	0,0	0,0	0,0	0,0	0,0	n. B.		
<i>61</i>														
Uher Horst												Gänsegasse 10, 99996 Großmehlra, Tel.: 036021-81103		
247	Z2	1.0	T 280	146	20,0	19,0	13,5	14,5	14,5	9,0	5,0	95,5	sg	27,50 €
248	Z2	1.0	T 280	145	20,0	19,0	14,0	13,5	14,5	9,5	5,0	95,5	sg	27,50 €
249	Z2	1.0	T 280	2416	20,0	18,5	14,0	14,5	14,5	9,5	5,0	96,0	sg	
250	Z2	1.0	T 280	2418	20,0	18,5	14,0	14,0	14,5	9,5	5,0	95,5	sg	
<i>62</i>												382,5	SoE-1	
Tepel Wilfried												Heimberg 9, 34519 Diemelsee-Adorf, Tel.: 05633-5297		
251	Z2	0.1	K 71	1413	20,0	18,5	14,0	14,0	14,5	9,0	5,0	95,0	sg	
252	Z2	1.0	K 71	2421	20,0	18,5	14,0	14,5	14,5	8,0	5,0	94,5	sg	
253	Z2	1.0	K 71	2422	20,0	18,5	14,0	14,5	14,5	9,0	5,0	95,5	sg	
254	Z2	0.1	K 71	1414	20,0	18,5	14,0	14,0	14,5	9,5	5,0	95,5	sg	
<i>63</i>												380,5	SoE-10	
Kerls Wolfgang												Wildeshäuser Str. 16a, 27239 Twistringen, Tel.: 04243-1385		
255	Z2	1.0	F 321	3429	20,0	18,0	14,5	14,5	14,0	9,0	5,0	95,0	sg	
256	Z2	1.0	F 321	3430	20,0	18,5	14,5	14,5	14,5	9,5	5,0	96,5	hv	
257	Z2	1.0	F 321	3425	20,0	18,5	14,0	13,5	14,5	9,5	5,0	95,0	sg	
258	Z2	0.1	F 321	3428	20,0	18,0	14,5	14,0	14,0	9,5	5,0	95,0	sg	
<i>64</i>												381,5	SoE-6	
Müller Karl-Heinz												Hohlgraben 2, 35305 Reinhardshain, Tel.: 06401-1373		
259	Z2	1.0	H 107	347	0,0	0,0	0,0	0,0	0,0	0,0	0,0	n. B.		
260	Z2	1.0	H 107	3411	20,0	19,0	13,5	14,5	14,5	9,5	5,0	96,0	sg	
261	Z2	0.1	H 107	343	20,0	18,5	14,0	14,5	14,5	9,5	5,0	96,0	sg	
262	Z2	0.1	H 107	346	20,0	17,5	13,5	14,0	14,5	9,5	5,0	94,0	sg	
<i>65</i>														
Vollrath Lenhard												Schwarzburger Straße 13, 99994 Schlotheim, Tel.: 036021-92138		
263	Z2	1.0	T 227	2415	20,0	19,0	14,0	14,0	14,0	9,5	5,0	95,5	sg	
264	Z2	1.0	T 227	2416	20,0	18,5	14,0	14,5	14,5	9,5	5,0	96,0	sg	
265	Z2	1.0	T 227	2417	20,0	18,0	14,0	14,5	14,5	9,5	5,0	95,5	sg	
266	Z2	0.1	T 227	2419	0,0	0,0	0,0	0,0	0,0	0,0	0,0	n. B.		
<i>66</i>														

Kat.-Nr.:	Z-Gr:	Geschl.:	Täto:	1.	2.	3.	4.	5.	6.	7.	Pkt.	Preis	Vkpr.:
-----------	-------	----------	-------	----	----	----	----	----	----	----	------	-------	--------

PR: Gambel Karl/Mösch Thomas/Winter Erwin

Dillenberger Gerhard

Kirchstrasse 6, 65597 Hünfelden-Mensfelden, Tel.: 06431-2120559

267	Z2	1.0	H 46	3413	20,0	18,5	14,0	14,0	14,0	0,0	0,0	n. B.	
268	Z2	0.1	H 46	349	20,0	19,0	13,5	14,0	14,5	9,0	5,0	95,0	sg
269	Z2	0.1	H 46	343	20,0	18,0	13,5	13,5	14,0	9,5	5,0	93,5	g
270	Z2	0.1	H 46	345	20,0	19,0	14,0	14,0	14,0	8,0	5,0	94,0	sg

67

Wittig Jörg

Platanenweg 12, 08060 Zwickau, Tel.: 0375-2049382

271	Z3	0.1	S 540	347	0,0	0,0	0,0	0,0	0,0	0,0	0,0	n. B.	
272	Z3	0.1	S 540	348	20,0	18,5	14,0	14,5	14,0	9,5	5,0	95,5	sg
273	Z3	0.1	S 540	4416	20,0	19,0	14,0	14,0	14,0	9,0	5,0	95,0	sg
274	Z3	0.1	S 540	4417	20,0	18,5	14,0	14,5	14,5	9,0	5,0	95,5	sg

68

Hölzel Harald

Unterheid 1, 95239 Zell, Tel.: 09257-965503

275	Z3	0.1	B 1052	149	20,0	19,0	14,0	14,0	14,0	10,0	5,0	96,0	sg
276	Z3	1.0	B 1052	4424	20,0	18,5	13,5	14,0	14,5	9,5	5,0	95,0	sg
277	Z3	0.1	B 1052	144	20,0	17,5	14,0	14,0	14,5	9,0	5,0	94,0	sg
278	Z3	0.1	B 1052	148	20,0	19,0	13,5	14,0	14,0	9,5	5,0	95,0	sg

69

380,0 SoE-12

Fritsch Axel

Bahnhofstr. 17, 99869 Drei Gleichen OT Wandersleben

279	Z3	1.0	T 174	143	20,0	18,5	14,0	14,5	14,5	9,5	5,0	96,0	sg
280	Z3	1.0	T 174	144	20,0	18,0	14,0	14,0	14,5	9,5	5,0	95,0	sg
281	Z3	0.1	T 174	148	20,0	18,5	13,5	14,0	14,5	9,5	5,0	95,0	sg
282	Z3	0.1	T 174	3414	20,0	18,5	14,0	13,5	14,5	9,5	5,0	95,0	sg

70

381,0 SoE-9

33,00 €

Degwer Hans Dieter

Strangstraße 25, 58239 Schwerte, Tel.: 02304-17277

283	Z3	1.0	W 390	041	20,0	19,0	13,5	14,5	14,5	9,5	5,0	96,0	sg
284	Z3	1.0	W 390	042	20,0	19,0	14,0	14,5	14,5	9,5	5,0	96,5	hv
285	Z3	0.1	W 390	3411	20,0	18,5	14,5	14,5	14,5	0,0	0,0	n. B.	
286	Z3	1.0	W 390	246	20,0	18,5	13,5	14,0	14,5	9,5	5,0	95,0	sg

71

Griesbach Günter

Schwarzenbacher Str. 6, 95119 Naila-Culmitz, Tel.: 09282-9322516

287	Z3	0.1	B 979	242	20,0	18,5	14,0	14,5	14,0	9,5	5,0	95,5	sg
288	Z3	0.1	B 979	3410	0,0	0,0	0,0	0,0	0,0	0,0	0,0	n. B.	
289	Z3	1.0	B 979	349	20,0	18,5	14,5	14,5	15,0	9,5	5,0	97,0	v
290	Z3	1.0	B 979	246	20,0	19,0	14,0	14,0	14,0	9,5	5,0	95,5	sg

72

Fehringer Karlheinz

Allendorfer Grund 2, 35260 Stadallendorf, Tel.: 06428-5713

291	Z3	1.0	K 1	243	20,0	18,5	14,0	14,5	14,5	9,5	5,0	96,0	sg
292	Z3	1.0	K 1	347	20,0	18,0	13,5	14,5	14,0	0,0	0,0	n. B.	
293	Z3	0.1	K 1	349	20,0	18,5	14,0	14,5	14,0	0,0	0,0	n. B.	
294	Z3	0.1	K 1	3410	20,0	18,0	14,0	15,0	14,5	8,0	5,0	94,5	sg

73

33,00 €

33,00 €

Glaser Anneliese

Ratstraße 7, 74229 Oedheim, Tel.: 07136-2708154

295	Z3	1.0	Z 122	345	20,0	19,0	14,0	14,5	14,5	9,5	5,0	96,5	hv
296	Z3	1.0	Z 122	349	20,0	19,0	14,0	14,0	14,5	9,5	5,0	96,0	sg
297	Z3	1.0	Z 122	3410	20,0	18,0	14,5	14,0	14,5	9,5	5,0	95,5	sg
298	Z3	0.1	Z 122	347	20,0	19,0	14,0	14,5	14,5	9,0	5,0	96,0	sg

74

384,0 LVE

Bodemer Silvio

Bergstr. 21, 76307 Karlsbad, Tel.: 07202-2641

299	Z3	0.1	C 583	3430	19,0	18,5	14,0	14,0	14,0	9,5	5,0	94,0	sg
300	Z3	1.0	C 583	143	20,0	19,0	13,5	14,0	14,5	8,5	5,0	94,5	sg
301	Z3	0.1	C 583	3424	20,0	18,0	13,5	14,5	14,5	9,0	5,0	94,5	sg
302	Z3	0.1	C 583	146	20,0	18,5	13,5	14,5	14,0	9,0	5,0	94,5	sg

75

377,5

Kat.-Nr.:	Z-Gr:	Geschl.:	Täto:	1.	2.	3.	4.	5.	6.	7.	Pkt.	Preis	Vkpr.:	
PR: Gambel Karl/Mösch Thomas/Winter Erwin														
Atzert Paul												Johannes Str. 2, 36119 Neuhof-Rommerz, Tel.: 06655-4677		
303	Z3	1.0	K 26	244	20,0	19,0	14,5	14,5	14,5	9,0	5,0	96,5	hv	
304	Z3	0.1	K 26	248	20,0	19,0	14,0	14,0	14,5	9,5	5,0	96,0	sg	39,60 €
305	Z3	0.1	K 26	249	20,0	18,5	14,0	14,5	14,0	10,0	5,0	96,0	sg	
306	Z3	0.1	K 26	2411	20,0	18,5	14,5	14,5	14,5	9,5	5,0	96,5	hv	39,60 €
76												385,0	LVE	
Degwer Hans Dieter												Strangstraße 25, 58239 Schwerte, Tel.: 02304-17277		
307	E	0.1	W 390	144	20,0	18,5	13,5	14,5	14,5	9,5	5,0	95,5	sg	38,50 €
Griesbach Günter												Schwarzenbacher Str. 6, 95119 Naila-Culmitz, Tel.: 09282-9322516		
308	E	0.1	B 979	243	20,0	19,0	14,0	14,5	14,5	9,0	5,0	96,0	sg	
Gantner Harald												Siedlerstr. 15, 87544 Blaichach, Tel.: 08321-82480		
309	E	1.0	B 277	447	20,0	19,0	14,5	14,5	14,5	8,5	5,0	96,0	sg	
Degwer Hans Dieter												Strangstraße 25, 58239 Schwerte, Tel.: 02304-17277		
310	E	0.1	W 390	145	20,0	18,5	14,0	14,5	14,5	9,5	5,0	96,0	sg	38,50 €
Gantner Harald												Siedlerstr. 15, 87544 Blaichach, Tel.: 08321-82480		
311	E	0.1	B 277	448	20,0	19,0	14,0	14,0	14,0	9,5	5,0	95,5	sg	

Russen blau-weiß

Griesbach Sandra												Schwarzenbacher Str. 6, 95119 Naila-Culmitz, Tel.: 09282-9322516		
312	Z1	0.1	C 305	238	20,0	18,5	13,5	14,5	14,0	9,5	5,0	95,0	sg	
313	Z1	1.0	B 979	241	20,0	19,5	14,0	15,0	14,5	9,0	5,0	97,0	v Sieger	
314	Z1	0.1	B 979	242	20,0	17,5	14,0	14,5	14,0	9,5	5,0	94,5	sg	
315	Z1	0.1	B 979	243	20,0	19,0	14,0	14,5	14,5	9,5	5,0	96,5	hv	
77													Rassemeister	383,0
Dillenberger Ursula												Kirchstrasse 6, 95597 Hünfelden-Mensfelden, Tel.: 06431-2120559		
316	Z2	1.0	H 46	348	19,0	17,5	13,5	14,0	14,5	9,0	5,0	92,5	g	
317	Z2	0.1	H 46	3413	19,0	18,5	14,0	14,0	14,0	9,0	5,0	93,5	g	
318	Z2	0.1	H 46	345	20,0	18,0	14,0	14,0	14,0	9,5	5,0	94,5	sg	
319	Z2	0.1	H 46	346	20,0	18,5	14,0	14,0	14,0	9,0	5,0	94,5	sg	
78														375,0
Bialek Kai-Uwe												Drüplinger Str. 4, 58640 Iserlohn, Tel.: 02378-911934		
320	Z2	1.0	W 343	141	20,0	19,0	14,0	14,0	14,5	9,5	5,0	96,0	sg	
321	Z2	0.1	W 343	142	20,0	18,0	14,0	13,5	14,5	9,5	5,0	94,5	sg	
322	Z2	0.1	W 343	2413	20,0	18,5	14,0	14,5	14,5	9,5	5,0	96,0	sg	
323	Z2	0.1	W 343	2414	20,0	18,0	13,5	14,0	14,0	9,5	5,0	94,0	sg	
79														380,5 SoE-10
Bast Heinz-Willi												Chemnitzer Str. 12, 35083 Wetter, Tel.: 06423-924766		
324	Z2	1.0	K 1	3415	20,0	19,0	14,0	14,0	14,0	9,0	5,0	95,0	sg	
325	Z2	1.0	K 1	3417	20,0	17,0	13,5	14,5	14,0	9,0	5,0	93,0	g	
326	Z2	0.1	K 1	3418	20,0	18,0	13,5	14,0	14,0	9,5	5,0	94,0	sg	
327	Z2	0.1	K 1	3419	0,0	0,0	0,0	0,0	0,0	0,0	0,0	n. B.		
80														
Dillenberger Ursula												Kirchstrasse 6, 95597 Hünfelden-Mensfelden, Tel.: 06431-2120559		
328	Z2	1.0	H 46	341	20,0	18,0	13,5	14,0	14,0	9,5	5,0	94,0	sg	
329	Z2	0.1	H 46	342	20,0	18,0	14,0	14,5	14,5	9,5	5,0	95,5	sg	
330	Z2	0.1	H 46	343	20,0	18,5	14,0	14,0	14,5	9,5	5,0	95,5	sg	
331	Z2	0.1	H 46	344	20,0	18,5	14,0	14,5	14,0	9,5	5,0	95,5	sg	
81														380,5 SoE-10
Schulze Wilfried												Gubener Vorstadt 23c, 03185 Peitz, Tel.: 035601-30000		
332	Z2	1.0	D 184	445	20,0	19,0	14,0	14,5	14,5	9,5	5,0	96,5	hv	
333	Z2	0.1	D 184	446	20,0	18,5	14,0	14,5	13,5	9,5	5,0	95,0	sg	
334	Z2	0.1	D 184	448	20,0	18,0	13,5	14,0	14,5	9,0	5,0	94,0	sg	33,00 €
335	Z2	0.1	D 184	4410	20,0	18,5	13,5	14,5	14,0	9,5	5,0	95,0	sg	
82														380,5 SoE-10

Kat.-Nr.:	Z-Gr:	Geschl.:	Täto:	1.	2.	3.	4.	5.	6.	7.	Pkt.	Preis	Vkpr.:
PR: Gambel Karl/Mösch Thomas/Winter Erwin													
Zimny Roman											Auf der Brüche 30, 58640 Iserlohn, Tel.: 02378-5056		
336	Z2	1.0	W 343	3417	20,0	18,5	14,0	14,0	14,5	9,5	5,0	95,5	sg
337	Z2	1.0	W 343	145	20,0	19,0	14,0	14,0	14,5	9,5	5,0	96,0	sg
338	Z2	0.1	W 343	3419	20,0	18,5	14,0	14,0	14,0	9,0	5,0	94,5	sg
339	Z2	0.1	W 343	147	20,0	18,0	14,5	14,0	14,5	8,5	5,0	94,5	sg
83												380,5	SoE-10
Gerweck Hermann											In der Tafel 8, 75015 Bretten, Tel.: 07252-4306		
340	Z3	1.0	C 327	141	20,0	18,0	14,0	14,5	14,0	9,5	5,0	95,0	sg
341	Z3	0.1	C 327	1410	20,0	19,0	14,0	14,0	14,0	9,5	5,0	95,5	sg
342	Z3	0.1	C 327	2434	20,0	19,0	14,0	14,0	14,5	10,0	5,0	96,5	hv
343	Z3	0.1	C 327	1416	20,0	18,5	14,0	14,0	14,5	9,0	5,0	95,0	sg
84												382,0	SoE-13
Rohe Iris											Kurpfalzstr. 12, 76767 Hagenbach, Tel.: 07273-941585		
344	Z3	1.0	P 89	3434	20,0	19,0	14,0	14,5	14,5	9,5	5,0	96,5	hv
345	Z3	1.0	P 89	1411	20,0	17,0	14,5	13,5	14,0	9,5	5,0	93,5	g
346	Z3	0.1	P 89	3457	20,0	18,5	14,0	14,5	14,5	9,5	5,0	96,0	sg
347	Z3	0.1	P 89	3437	20,0	19,0	14,0	14,5	14,0	9,5	5,0	96,0	sg
85												382,0	SoE-3
Hölzel Kerstin											Unterhaid 1, 95239 Zell, Tel.: 09257-965503		
348	E	0.1	B 1052	343	18,0	18,5	13,5	14,5	14,5	10,0	5,0	94,0	sg